

# Home Design

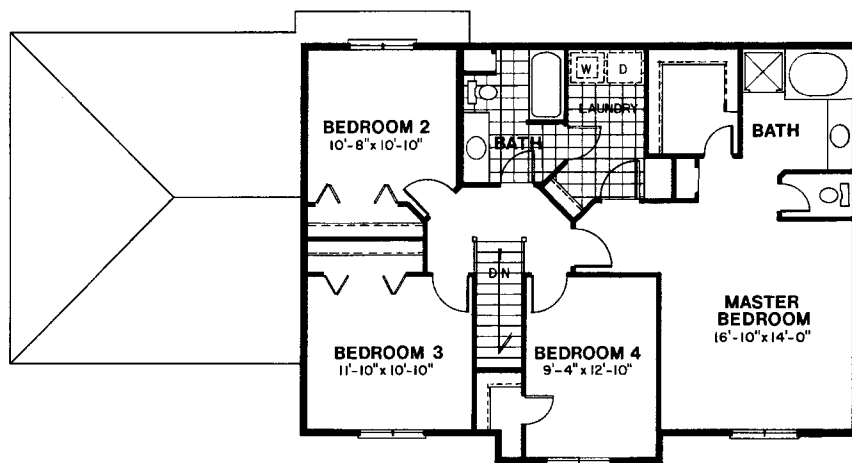
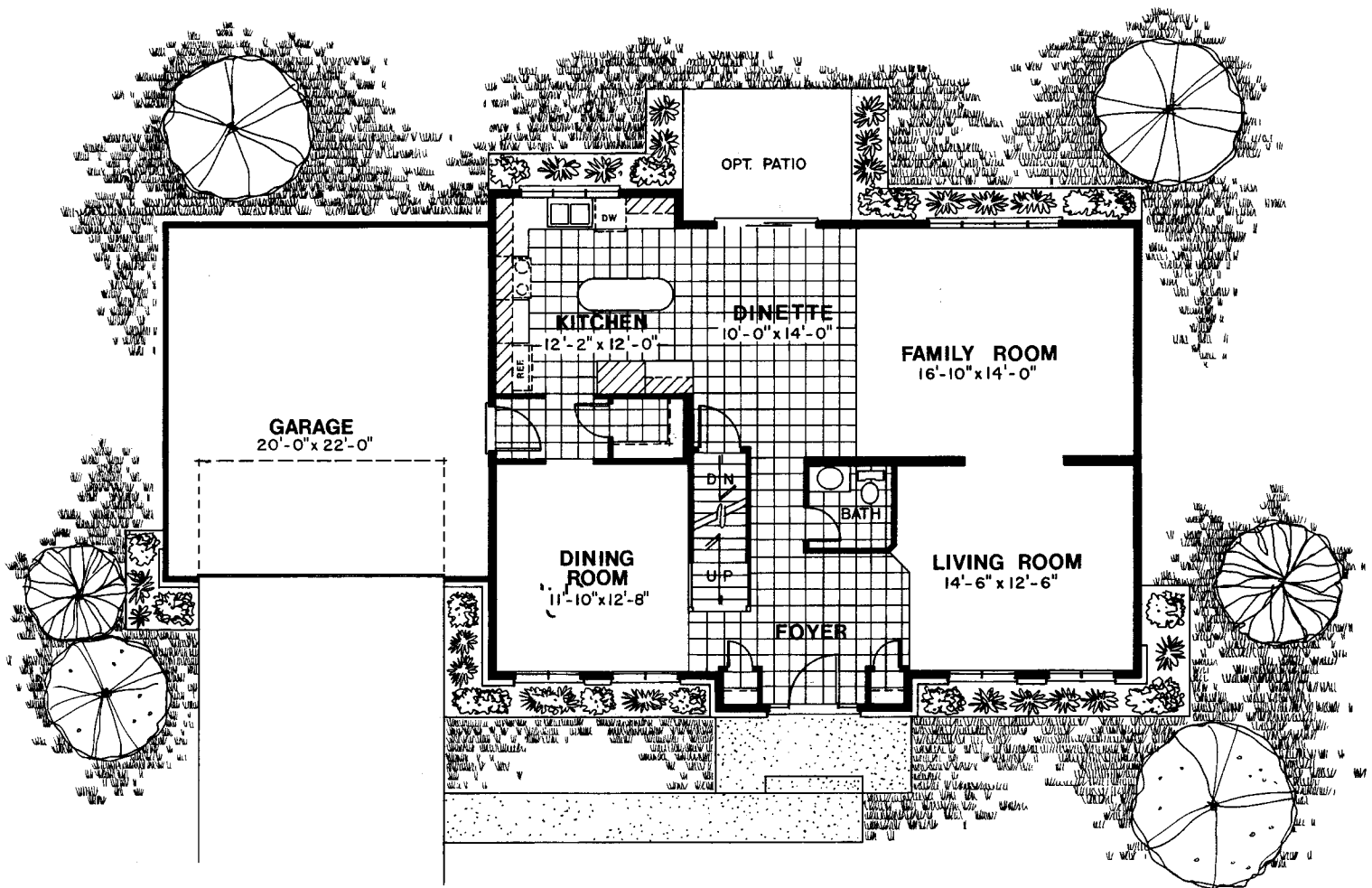


2,312 Square Foot Two-Story

**HUNTINGTON**

**Hans  
Hagen  
Homes**

# If You Can Dream It... We Can Build It



## HUNTINGTON

[www.hanshagenhomes.com](http://www.hanshagenhomes.com)

941 N.E. Hillwind Road Suite 300 • Minneapolis, Minnesota 55432 • 612/586-7200

*Plans and specifications are constantly changed to better serve our customer's.*

*Final plans and specifications will determine dimensions, elevations and products used.*

5/98 © All plans are copyrighted by Hans Hagen Homes, Inc., MN builder license no. 0001991



**Hans  
Hagen  
Homes**

# Home Design

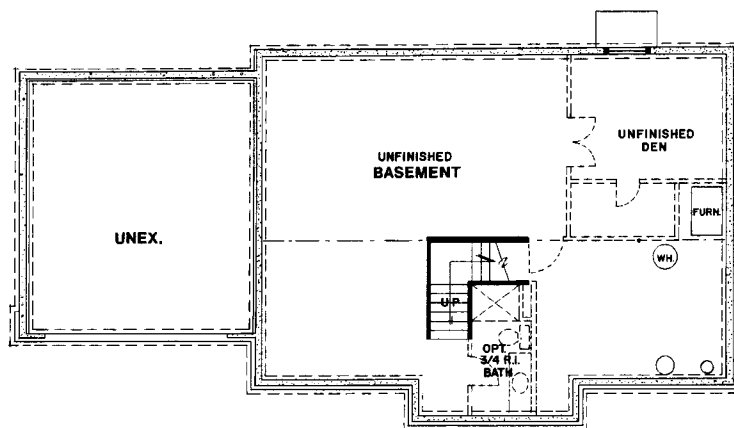
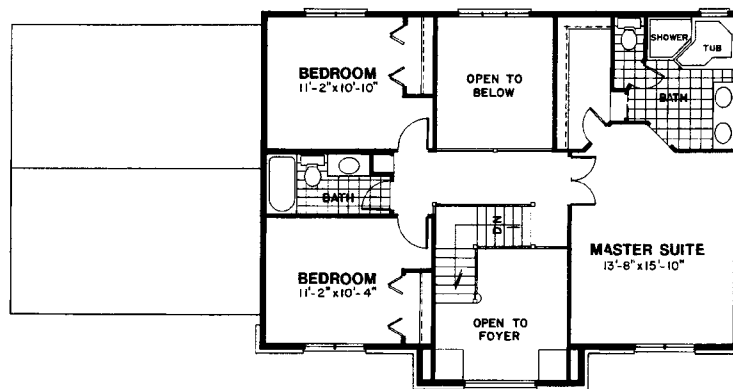
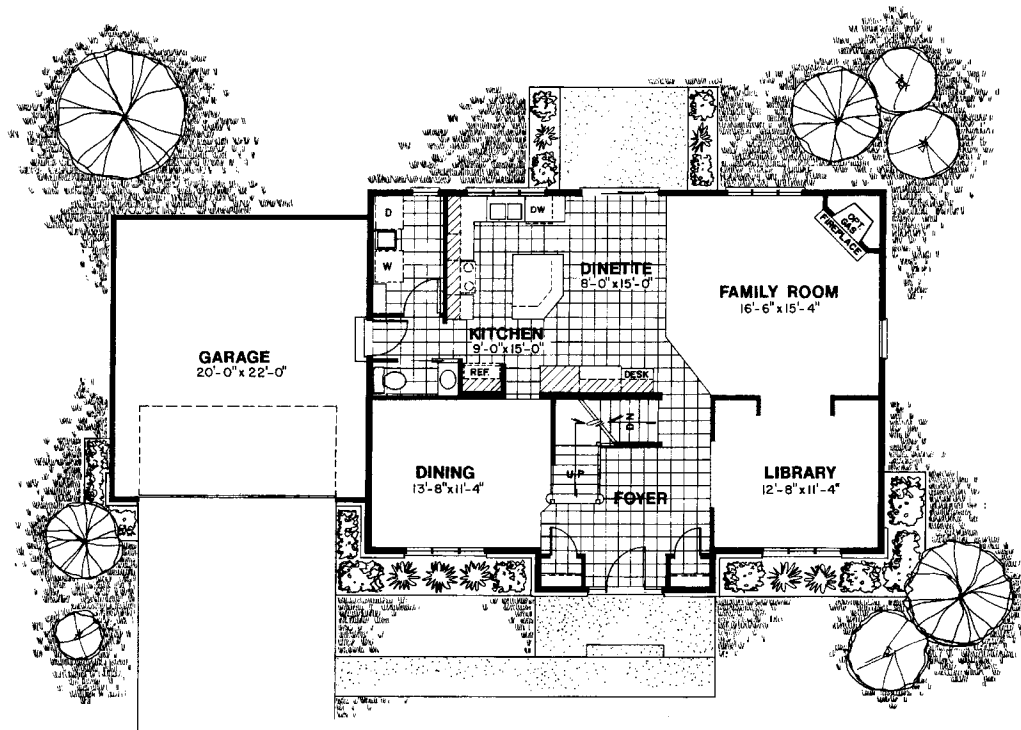


2,324 Square Foot Two-Story

**WOODHILL II**

**Hans  
Hagen  
Homes**

# If You Can Dream It... We Can Build It



## WOODHILL II

[www.hanshagenhomes.com](http://www.hanshagenhomes.com)

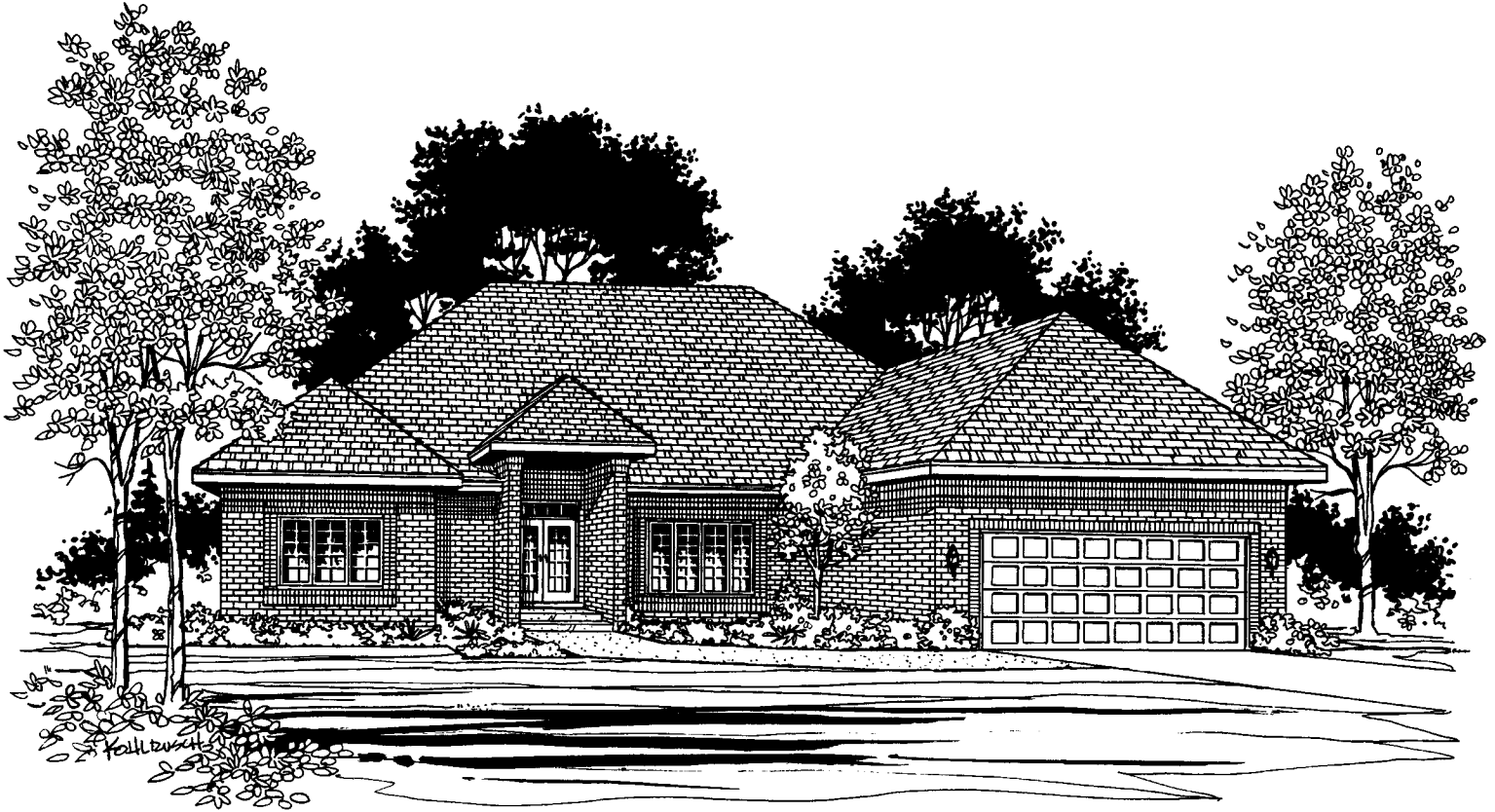
941 N.E. Hillwind Road Suite 300 • Minneapolis, Minnesota 55432 • 612/586-7200



Plans and specifications are constantly changed to better serve our customer's.  
 Final plans and specifications will determine dimensions, elevations and products used.  
 4/98 © All plans are copyrighted by Hans Hagen Homes, Inc., MN builder license no. 0001991



# Home Design

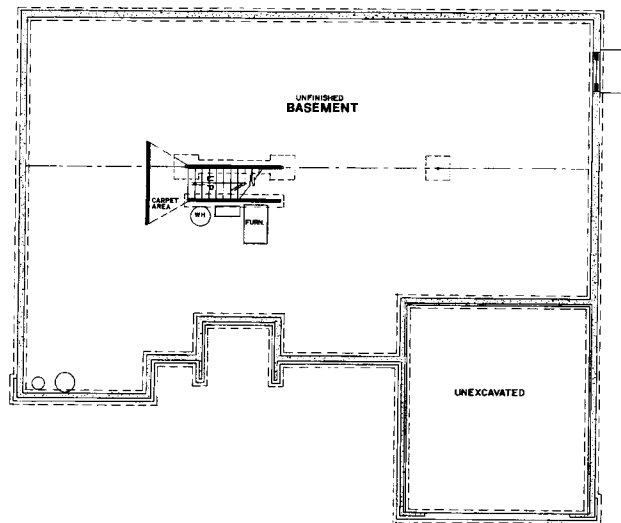
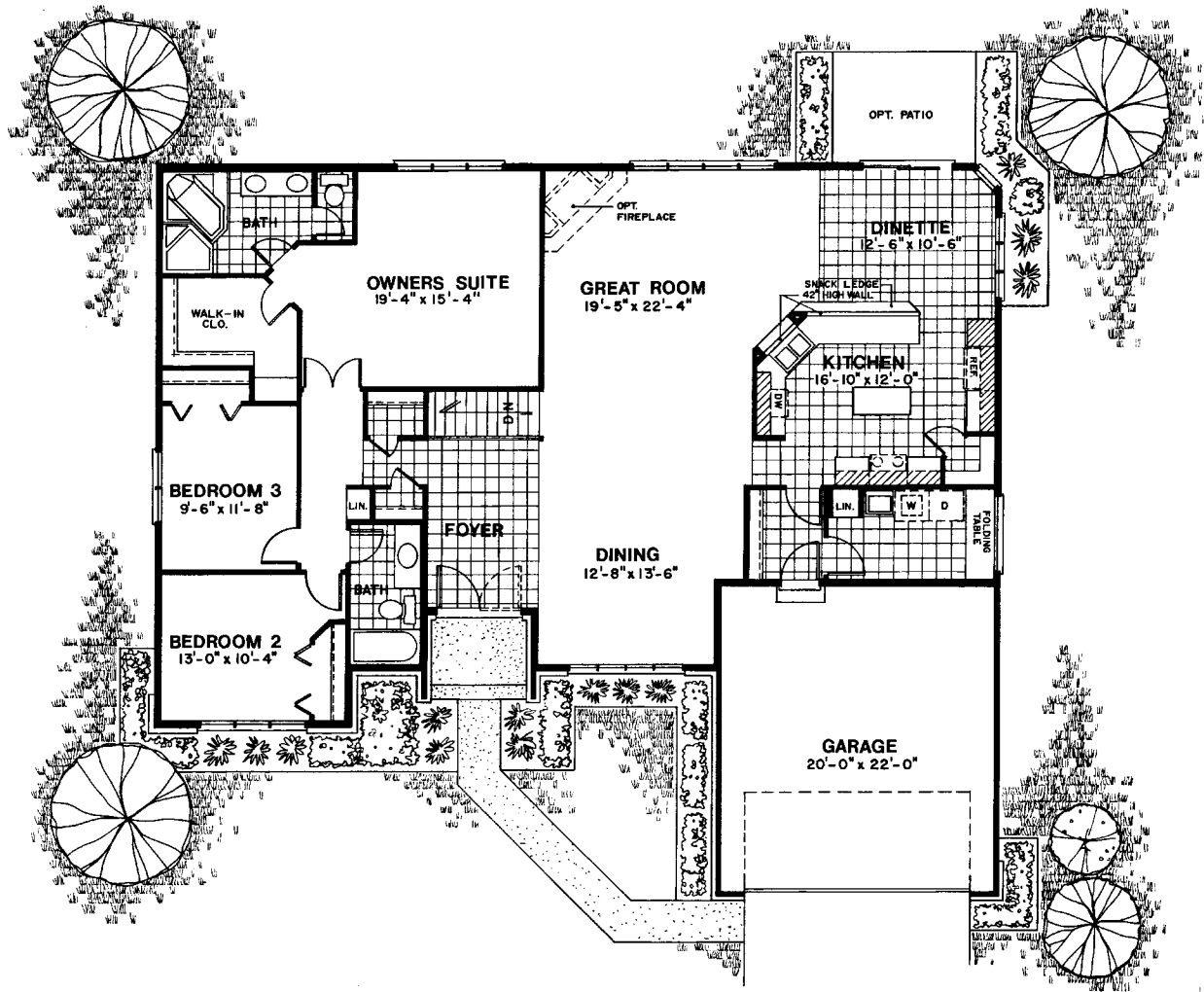


2,067 Square Foot Rambler

**BRYANT**

**Hans  
Hagen  
Homes**

# If You Can Dream It... We Can Build It



**BRYANT**

[www.hanshagenhomes.com](http://www.hanshagenhomes.com)

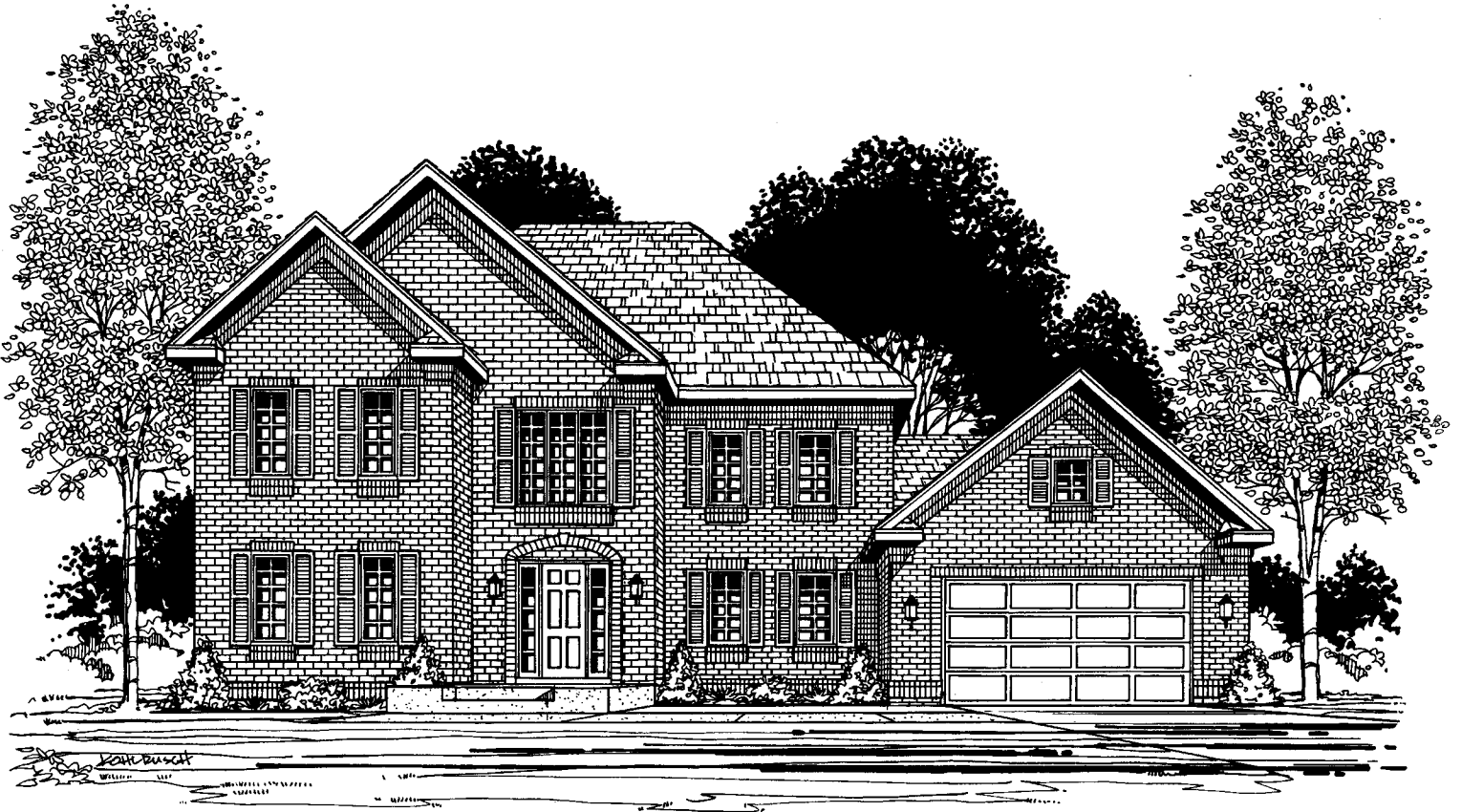
941 N.E. Hillwind Road Suite 300 • Minneapolis, Minnesota 55432 • 612/586-7200



Plans and specifications are constantly changed to better serve our customer's.  
Final plans and specifications will determine dimensions, elevations and products used.  
4/98 © All plans are copyrighted by Hans Hagen Homes, Inc., MN builder license no. 0001991

**Hans  
Hagen  
Homes**

# Home Design

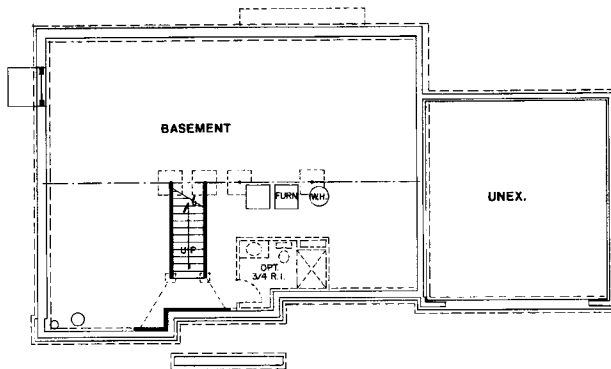
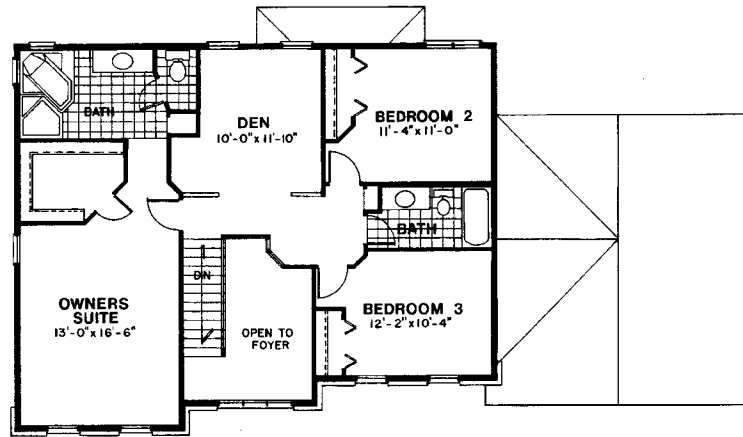
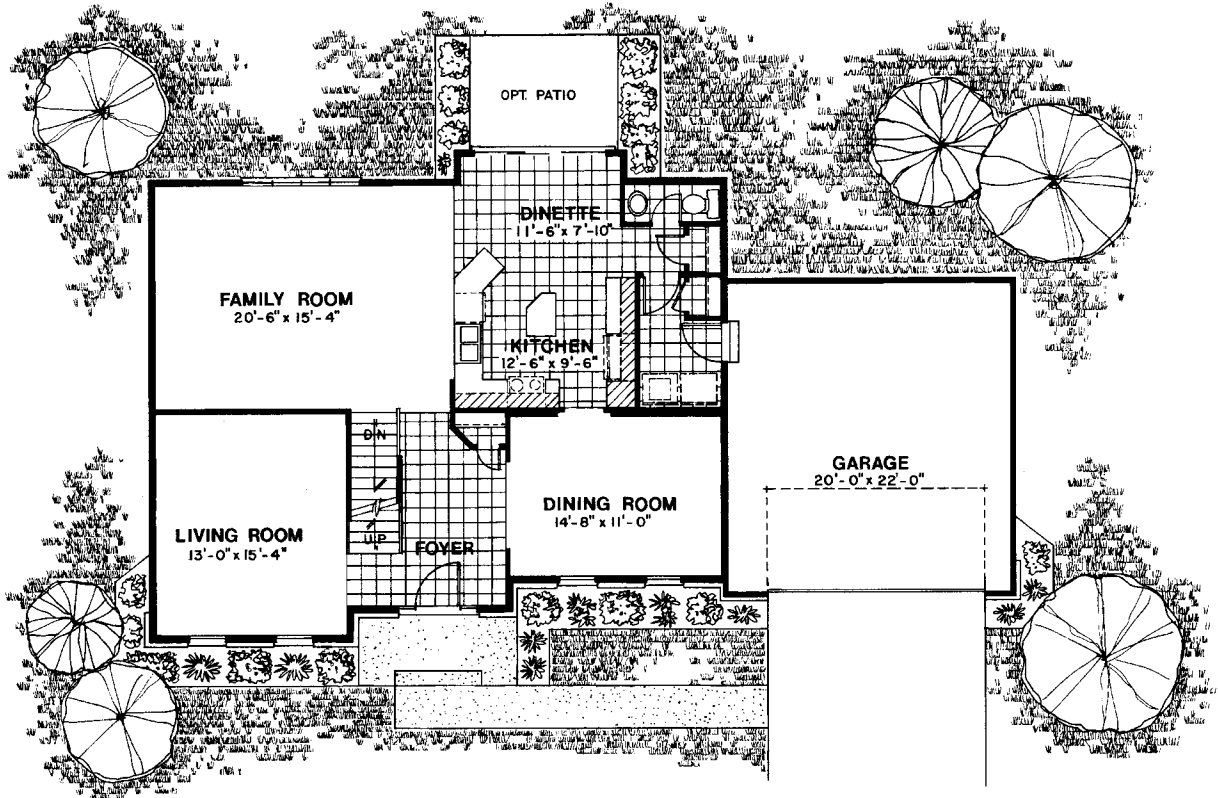


2,422 Square Foot Two-Story

**SPRINGFIELD**

**Hans  
Hagen  
Homes**

# If You Can Dream It... We Can Build It



## SPRINGFIELD

[www.hanshagenhomes.com](http://www.hanshagenhomes.com)

941 N.E. Hillwind Road Suite 300 • Minneapolis, Minnesota 55432 • 612/586-7200



*Plans and specifications are constantly changed to better serve our customer's.  
Final plans and specifications will determine dimensions, elevations and products used.*  
4/98 © All plans are copyrighted by Hans Hagen Homes, Inc., MN builder license no. 0001991





# Home Design

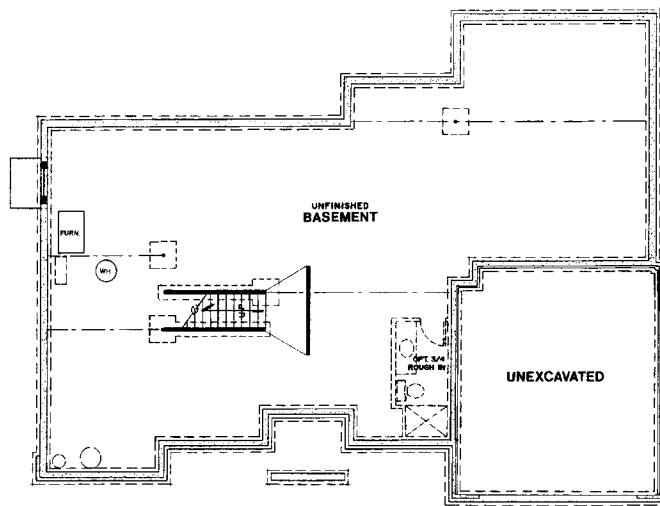
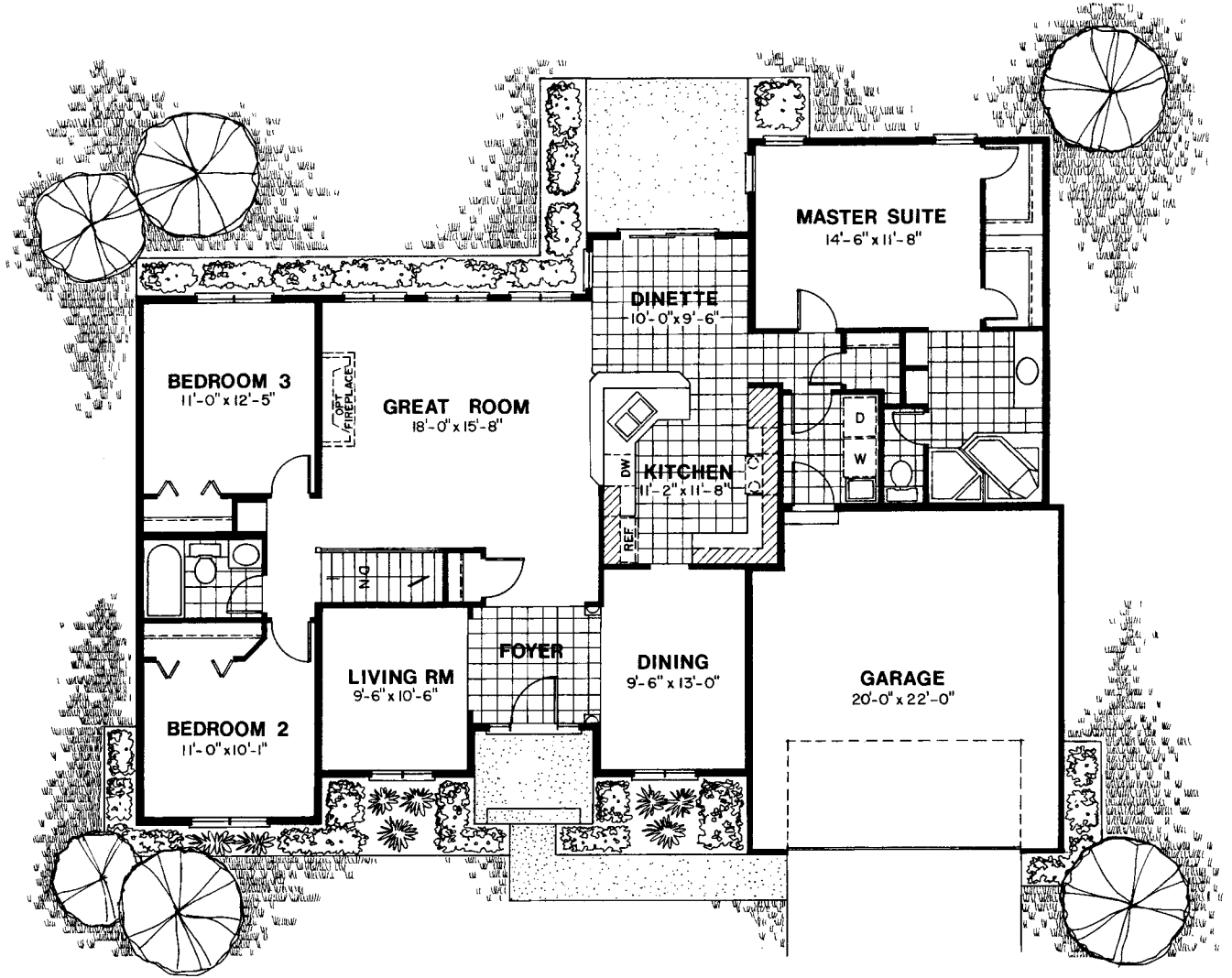


1,763 Square Foot Rambler

**GLENHURST**

**Hans  
Hagen  
Homes**

If You Can Dream It... We Can Build It



## GLENHURST

[www.hanshagenhomes.com](http://www.hanshagenhomes.com)

941 N.E. Hillwind Road Suite 300 • Minneapolis, Minnesota 55432 • 612/586-7200

*Plans and specifications are constantly changed to better serve our customer's.*

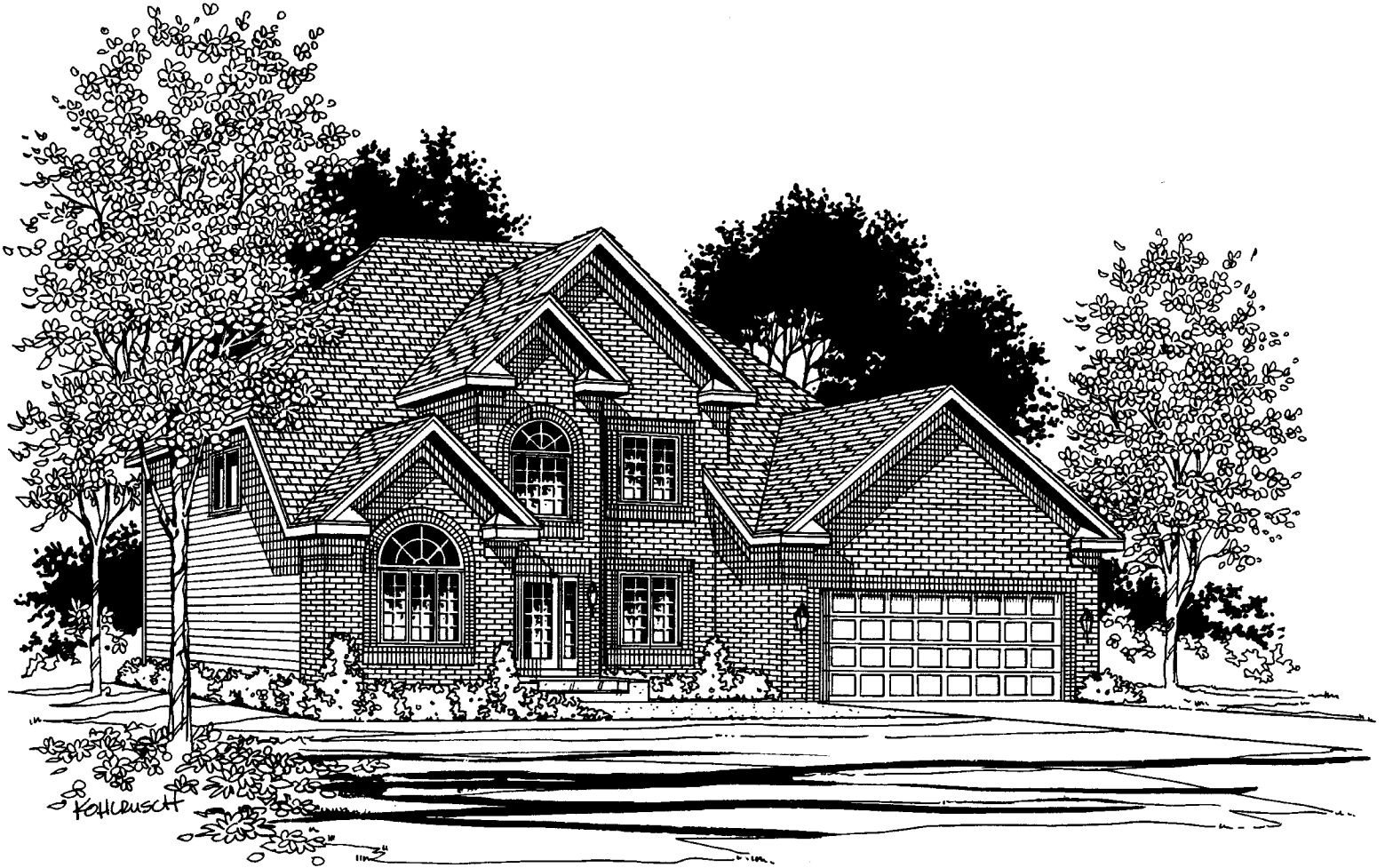
*Final plans and specifications will determine dimensions, elevations and products used.*

5/98 © All plans are copyrighted by Hans Hagen Homes, Inc., MN builder license no. 0001991



**Hans  
Hagen  
Homes**

# Home Design

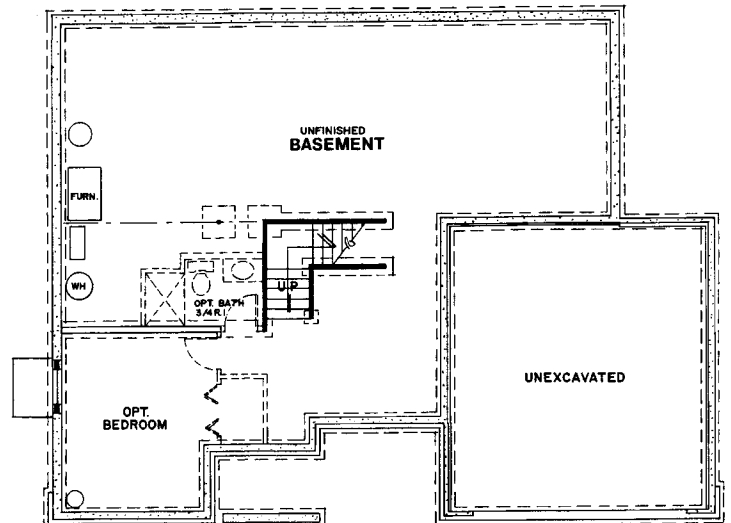
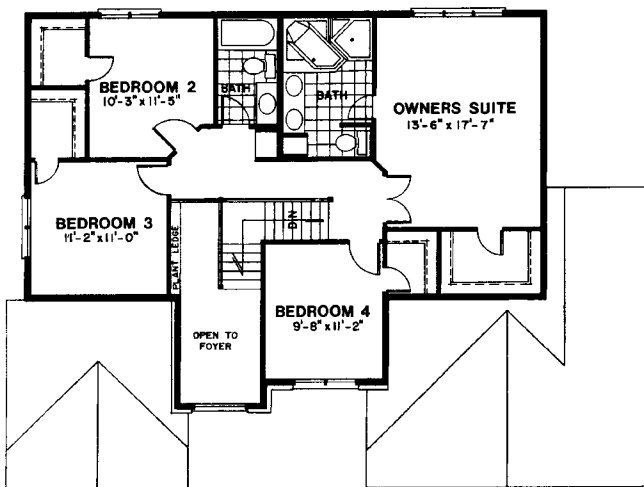
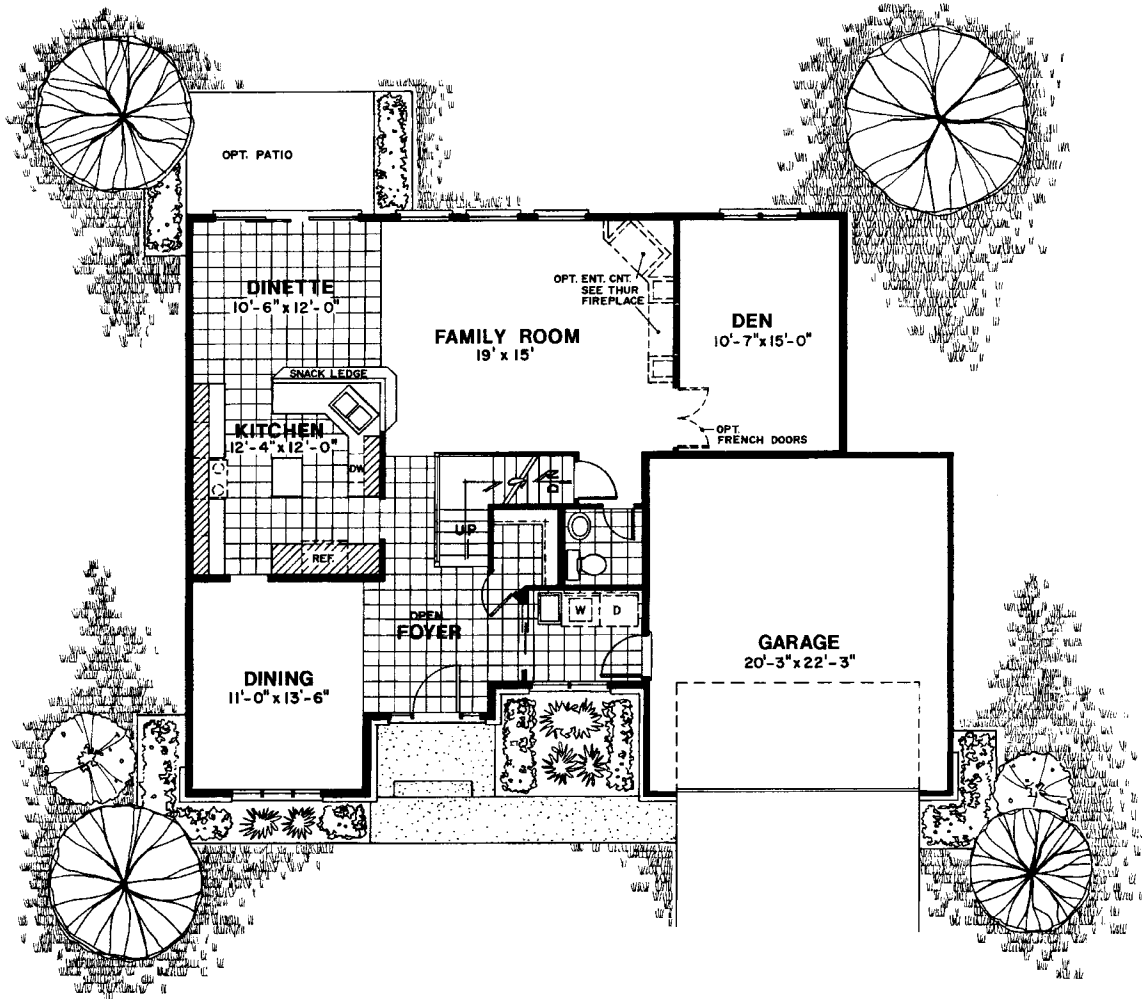


2,408 Square Foot Two-Story

LANSING

**Hans  
Hagen  
Homes**

# If You Can Dream It... We Can Build It



## LANSING

[www.hanshagenhomes.com](http://www.hanshagenhomes.com)

941 N.E. Hillwind Road Suite 300 • Minneapolis, Minnesota 55432 • 612/586-7200



Plans and specifications are constantly changed to better serve our customer's.  
 Final plans and specifications will determine dimensions, elevations and products used.  
 5/98 © All plans are copyrighted by Hans Hagen Homes, Inc., MN builder license no. 0001991



# Home Design

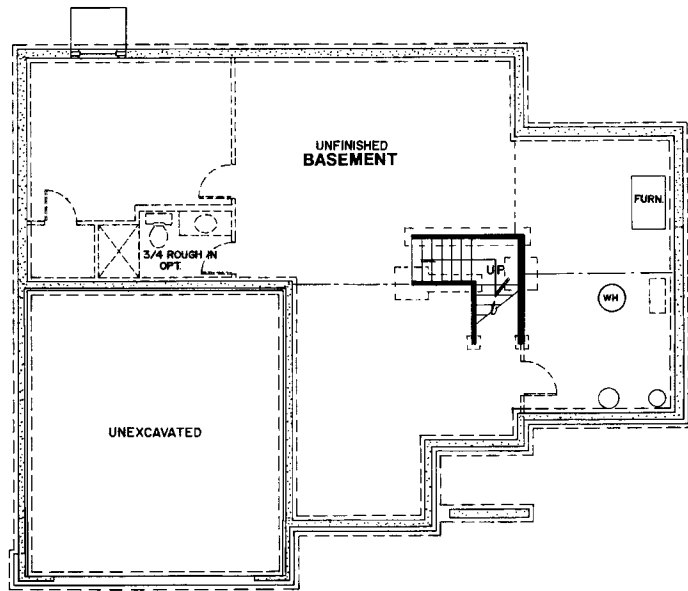
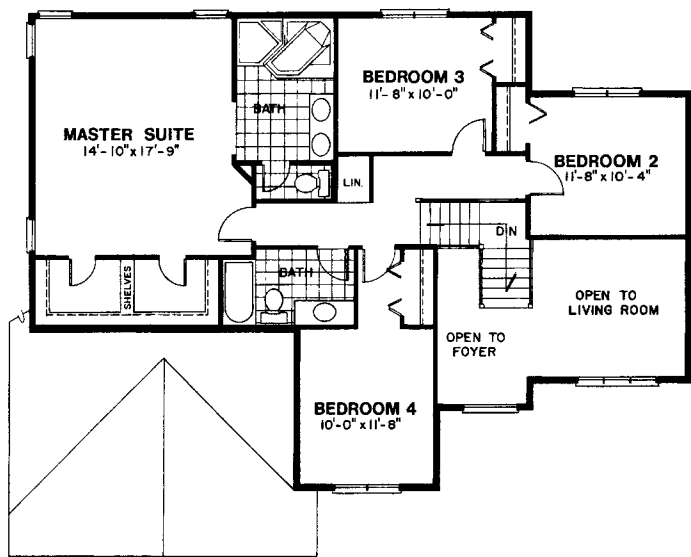
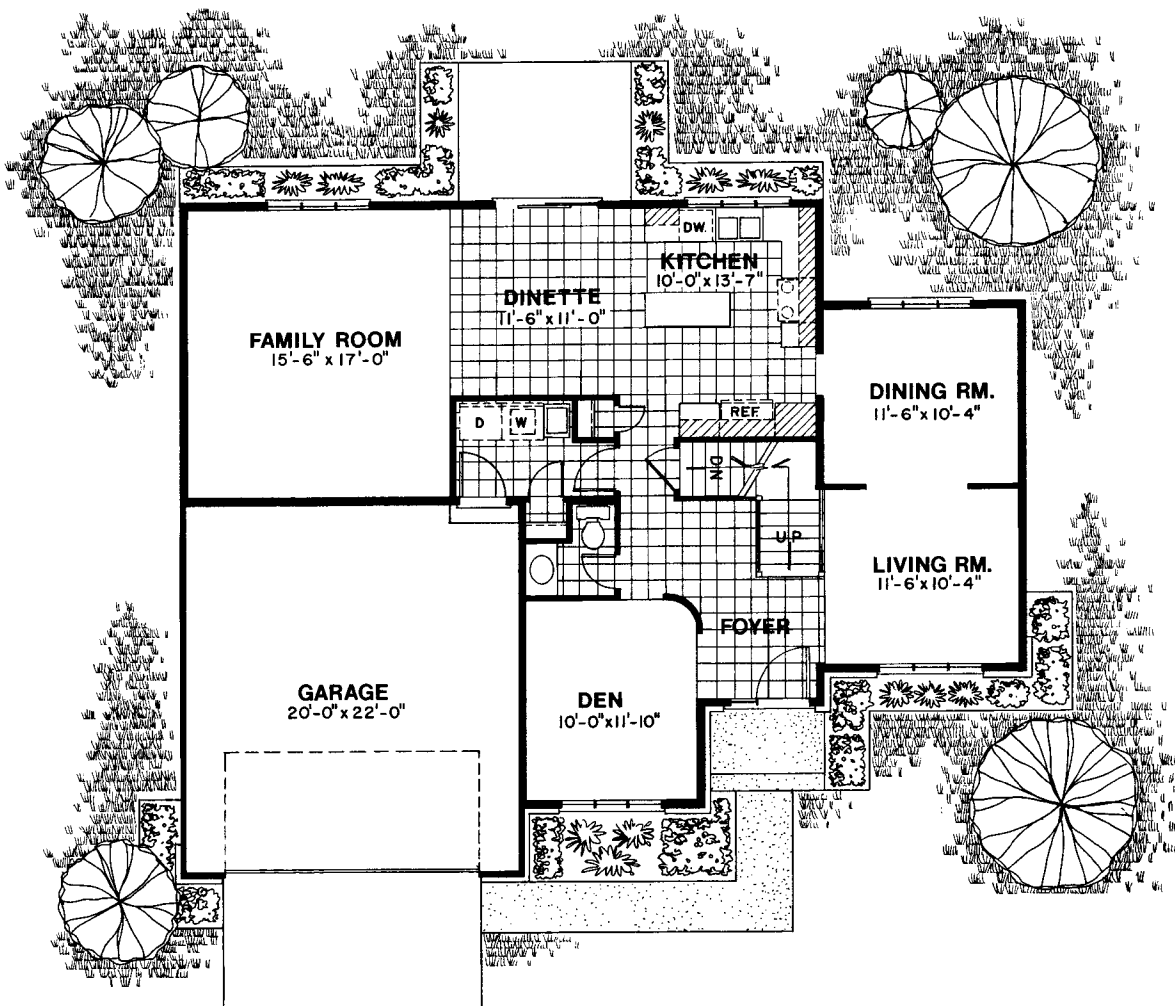


2,450 Square Foot Two-Story

**HILLCREST**

**Hans  
Hagen  
Homes**

# If You Can Dream It... We Can Build It



## HILLCREST

[www.hanshagenhomes.com](http://www.hanshagenhomes.com)

941 N.E. Hillwind Road Suite 300 • Minneapolis, Minnesota 55432 • 612/586-7200

*Plans and specifications are constantly changed to better serve our customer's.*

*Final plans and specifications will determine dimensions, elevations and products used.*

5/98 © All plans are copyrighted by Hans Hagen Homes, Inc., MN builder license no. 0001991



# Home Design

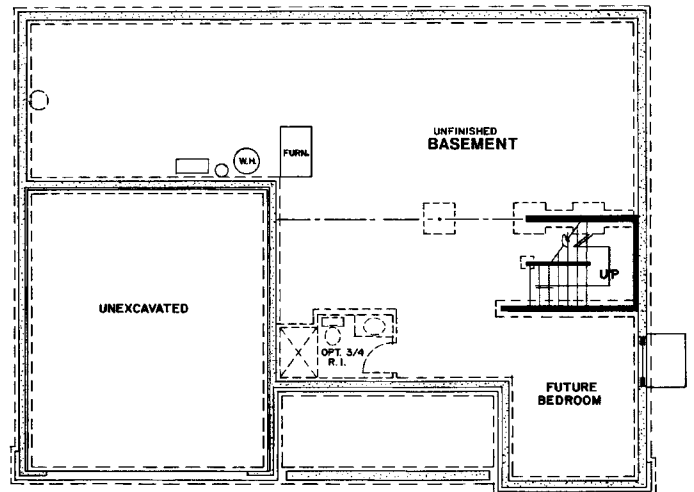
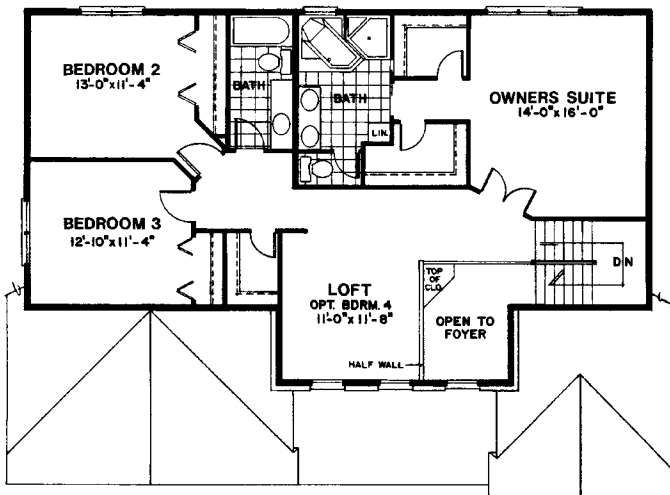
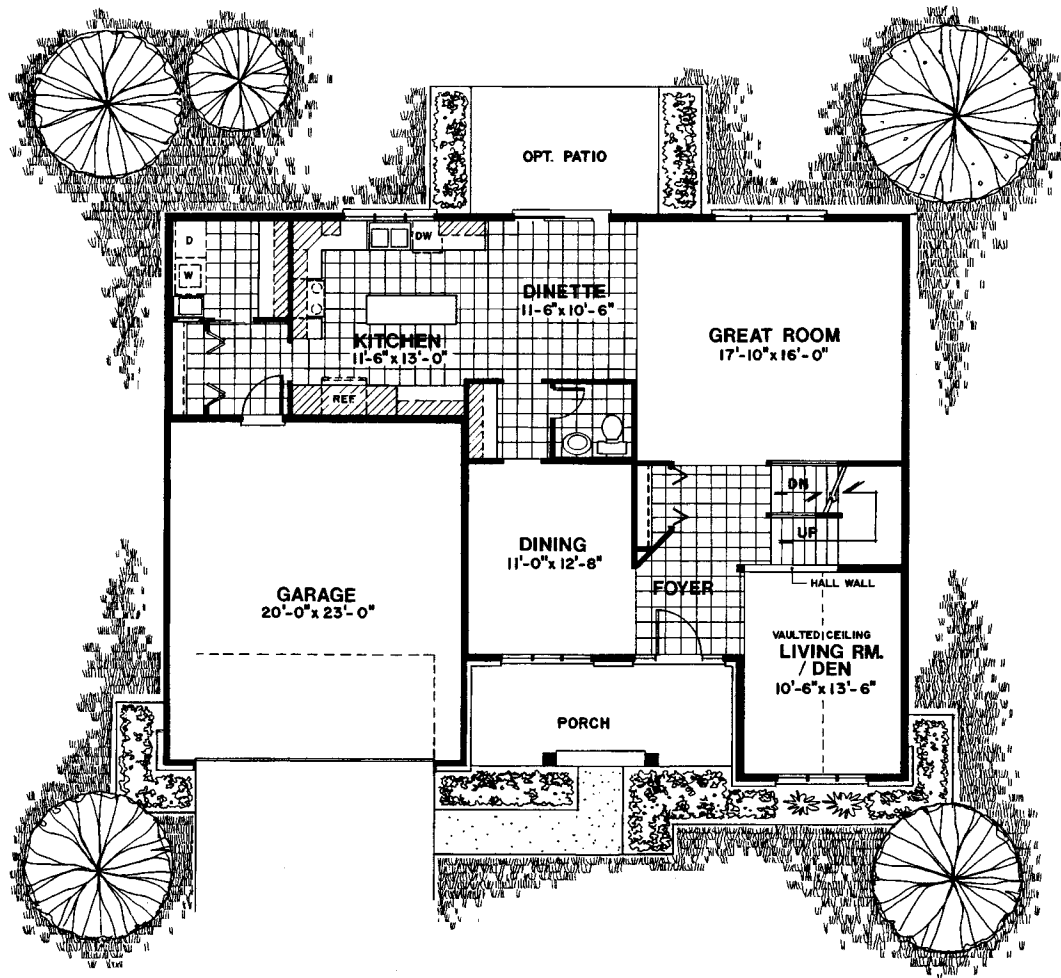


2,586 Square Foot Two-Story

**NICOLLET**

**Hans  
Hagen  
Homes**

# If You Can Dream It... We Can Build It



## NICOLLET

[www.hanshagenhomes.com](http://www.hanshagenhomes.com)

941 N.E. Hillwind Road Suite 300 • Minneapolis, Minnesota 55432 • 612/586-7200

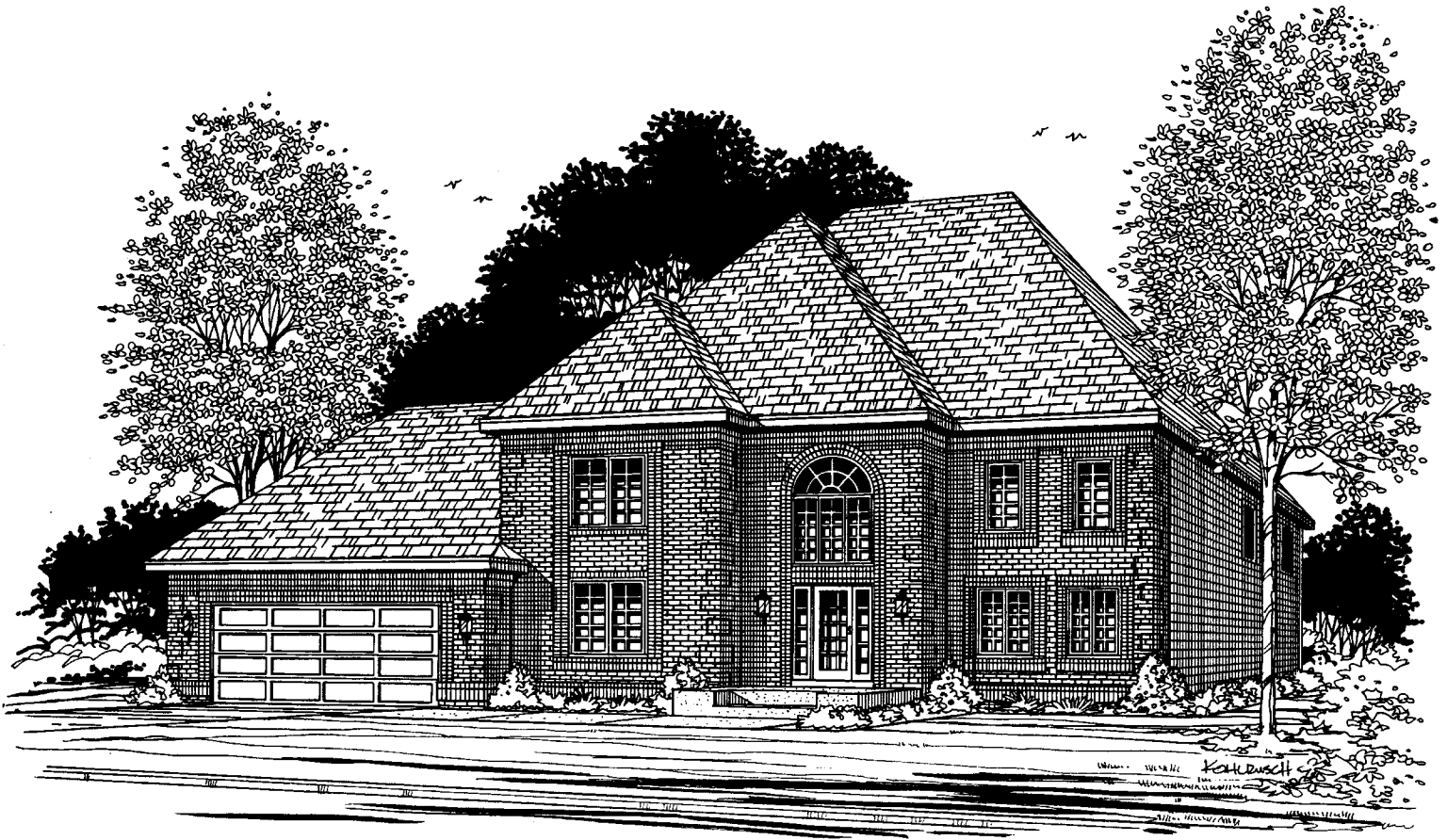


*Plans and specifications are constantly changed to better serve our customer's.*  
*Final plans and specifications will determine dimensions, elevations and products used.*  
 4/00 © All plans are copyrighted by Hans Hagen Homes, Inc., MN builder license no. 0001991





# Home Design

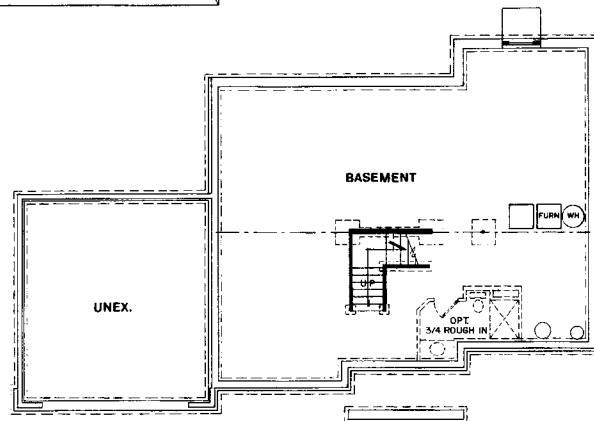
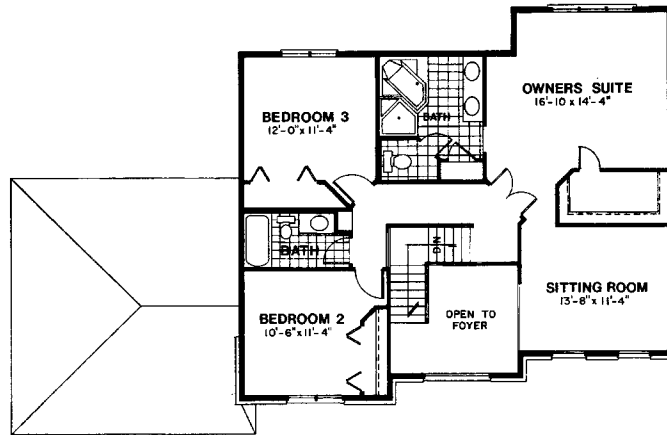
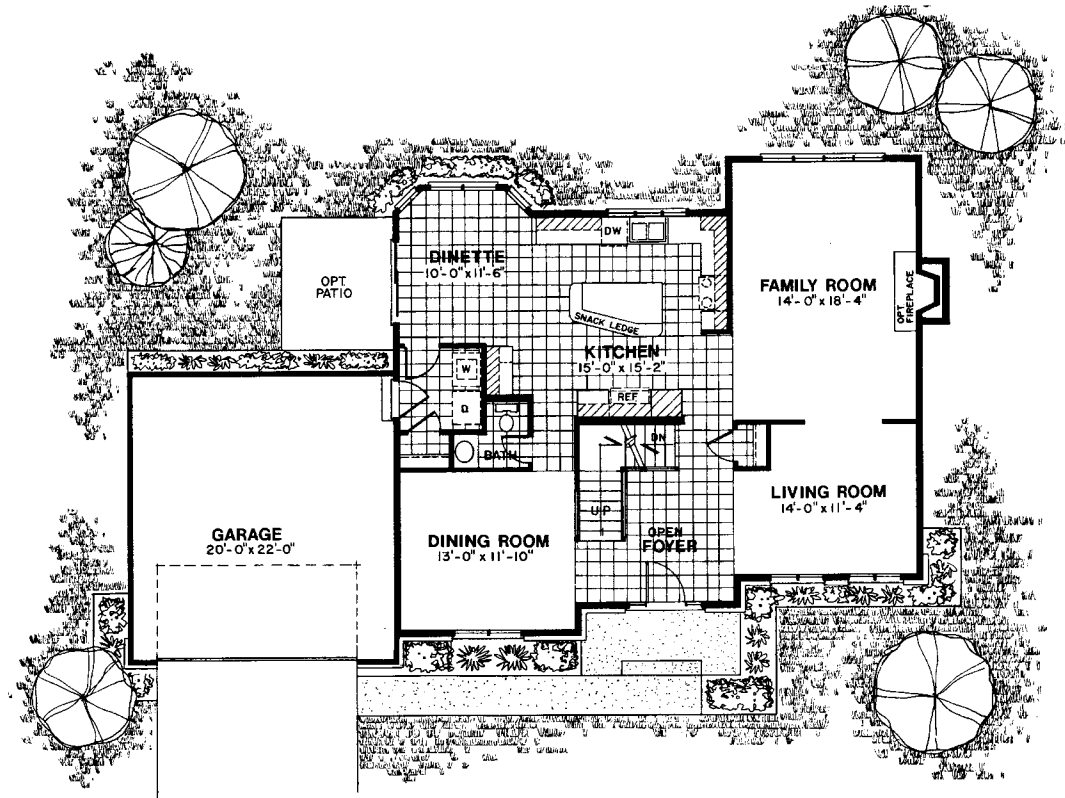


2,540 Square Foot Two-Story

**ST. CHARLES**

**Hans  
Hagen  
Homes**

# If You Can Dream It... We Can Build It



## ST. CHARLES

[www.hanshagenhomes.com](http://www.hanshagenhomes.com)

941 N.E. Hillwind Road Suite 300 • Minneapolis, Minnesota 55432 • 612/586-7200



*Plans and specifications are constantly changed to better serve our customer's.*  
*Final plans and specifications will determine dimensions, elevations and products used.*  
 4/98 © All plans are copyrighted by Hans Hagen Homes, Inc., MN builder license no. 0001991



# Home Design

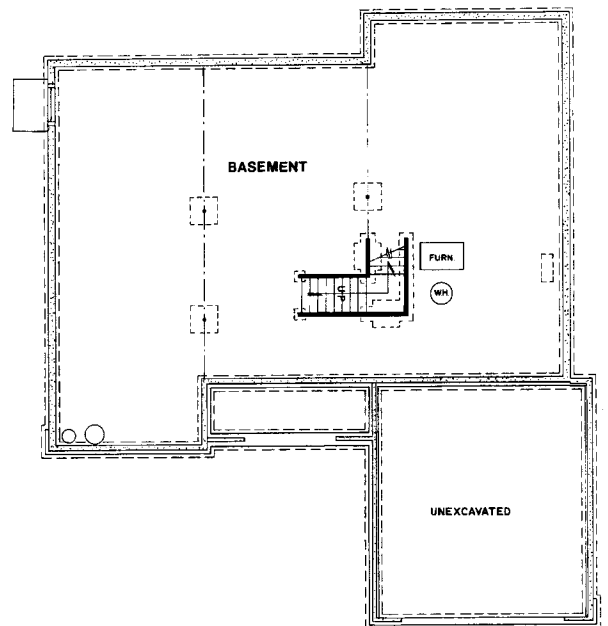
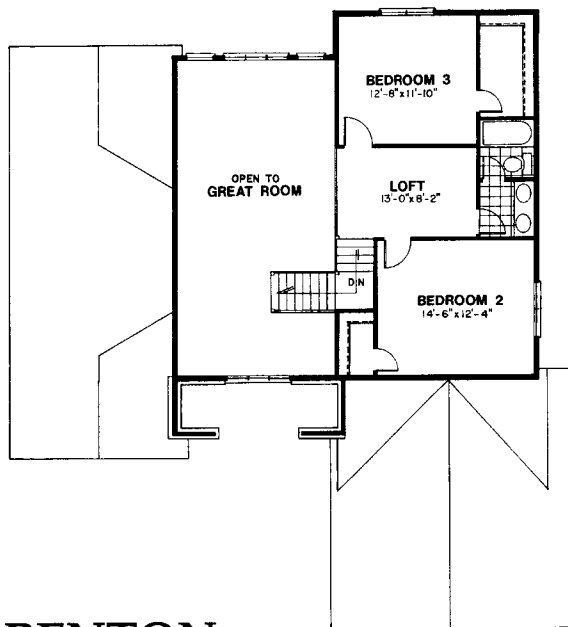
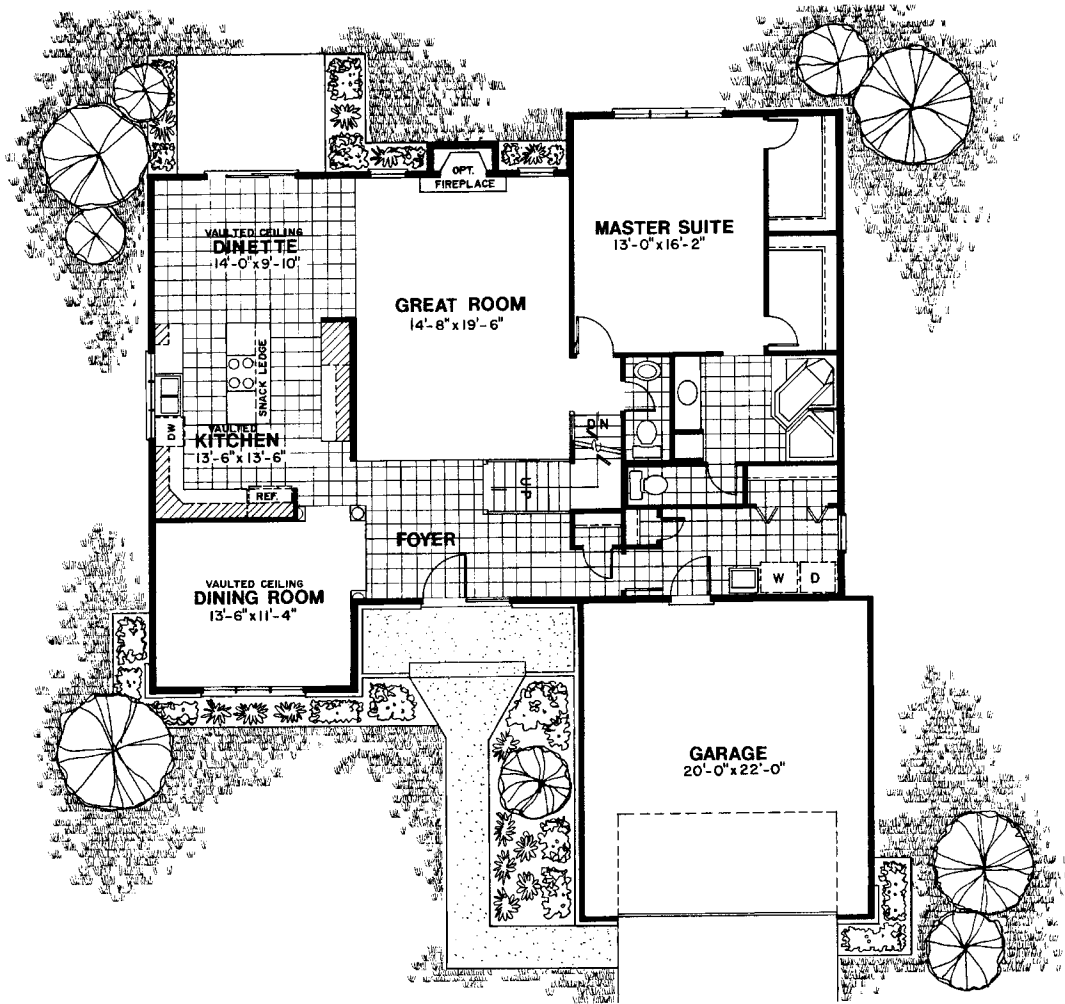


2,759 Square Foot Two-Story

**BENTON**

**Hans  
Hagen  
Homes**

# If You Can Dream It... We Can Build It



**BENTON**

[www.hanshagenhomes.com](http://www.hanshagenhomes.com)

941 N.E. Hillwind Road Suite 300 • Minneapolis, Minnesota 55432 • 612/586-7200

*Plans and specifications are constantly changed to better serve our customer's.*

*Final plans and specifications will determine dimensions, elevations and products used.*

5/98 © All plans are copyrighted by Hans Hagen Homes, Inc., MN builder license no. 0001991



# Home Design

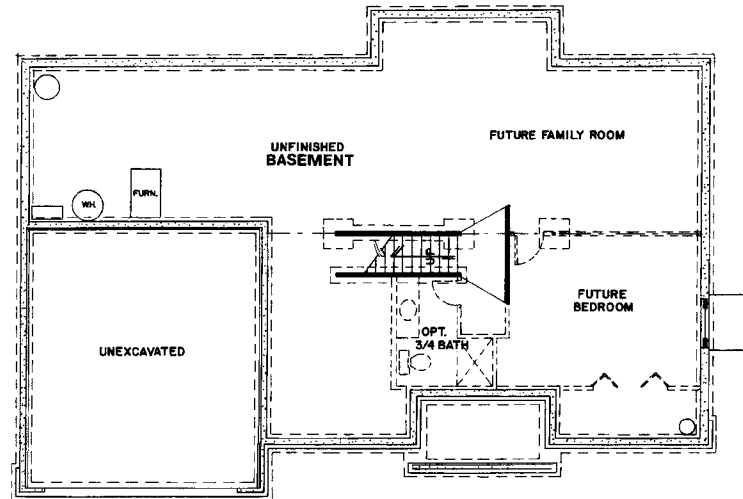
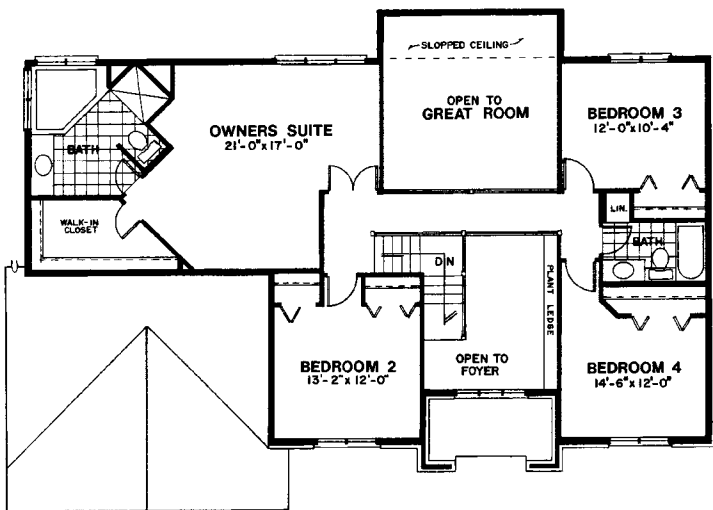
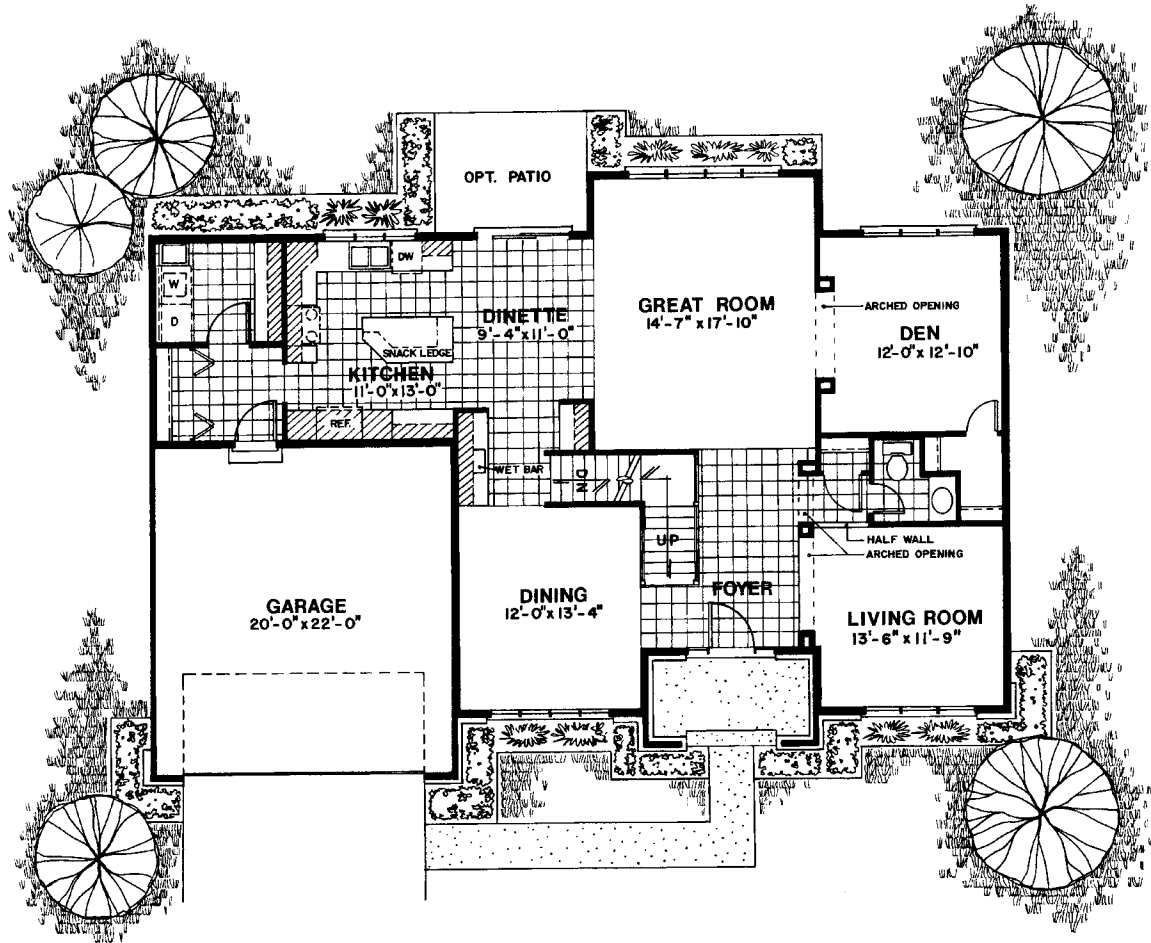


2,659 Square Foot Two-Story

**WYNDAMERE**

**Hans  
Hagen  
Homes**

*If You Can Dream It... We Can Build It*



**WYNDAMERE**

[www.hanshagenhomes.com](http://www.hanshagenhomes.com)

941 N.E. Hillwind Road Suite 300 • Minneapolis, Minnesota 55432 • 612/586-7200

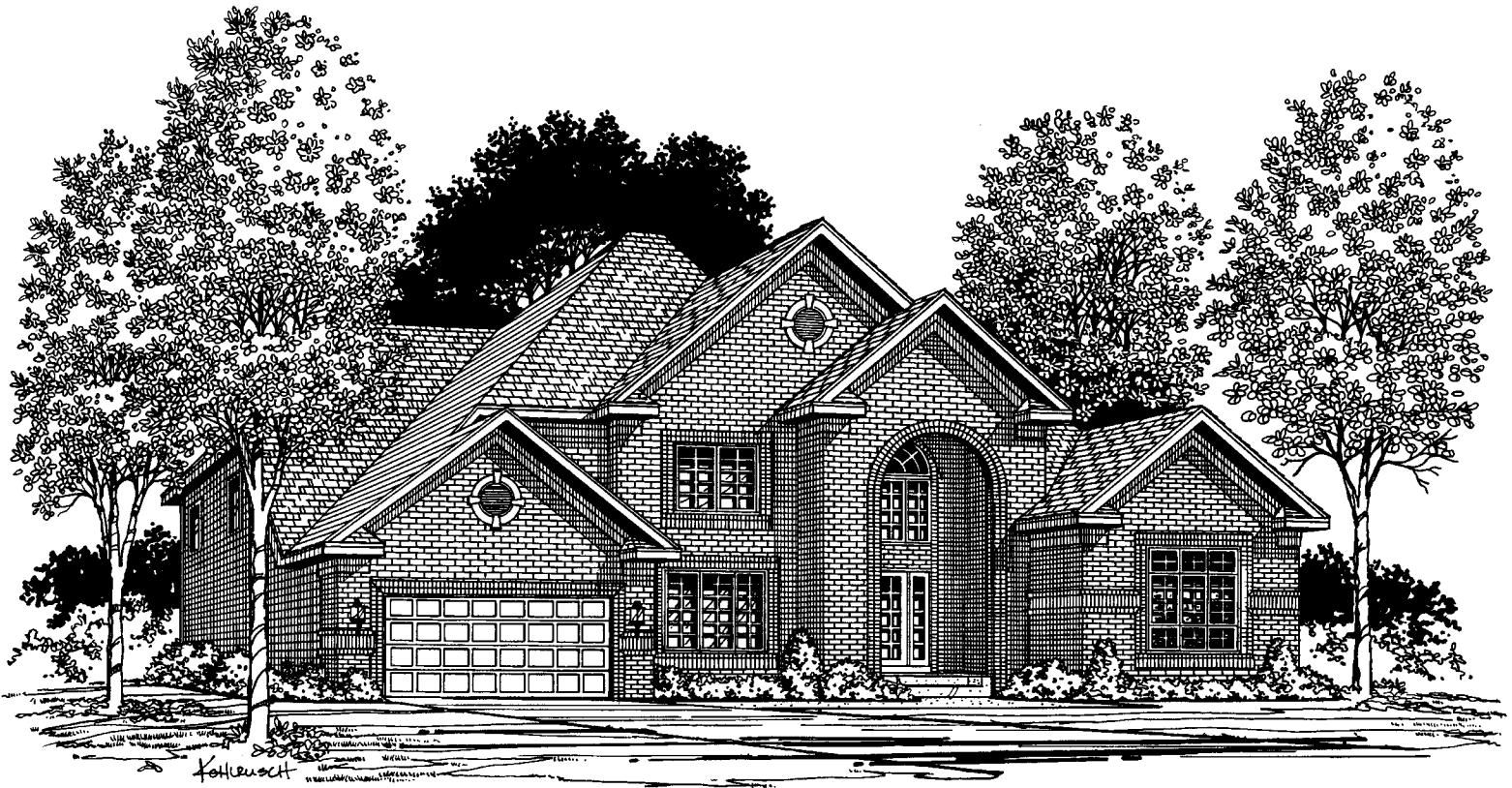
*Plans and specifications are constantly changed to better serve our customer's.*

*Final plans and specifications will determine dimensions, elevations and products used.*

11/98 © All plans are copyrighted by Hans Hagen Homes, Inc., MN builder license no. 0001991



# Home Design

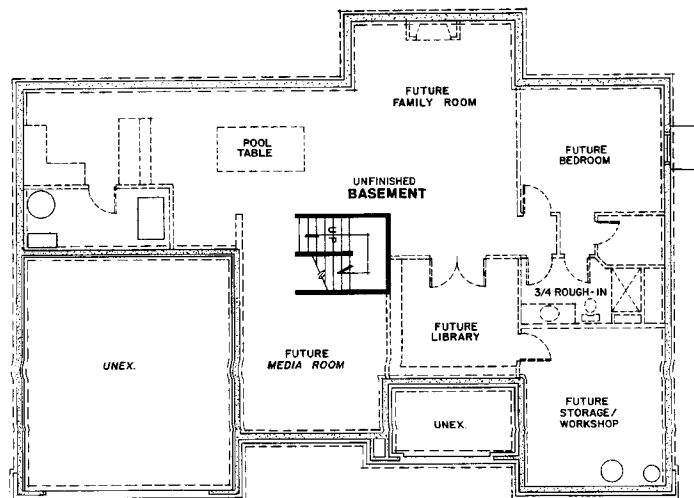
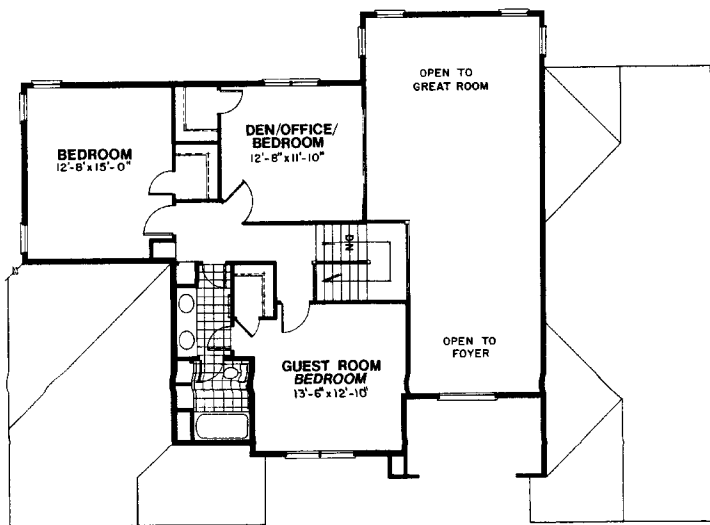
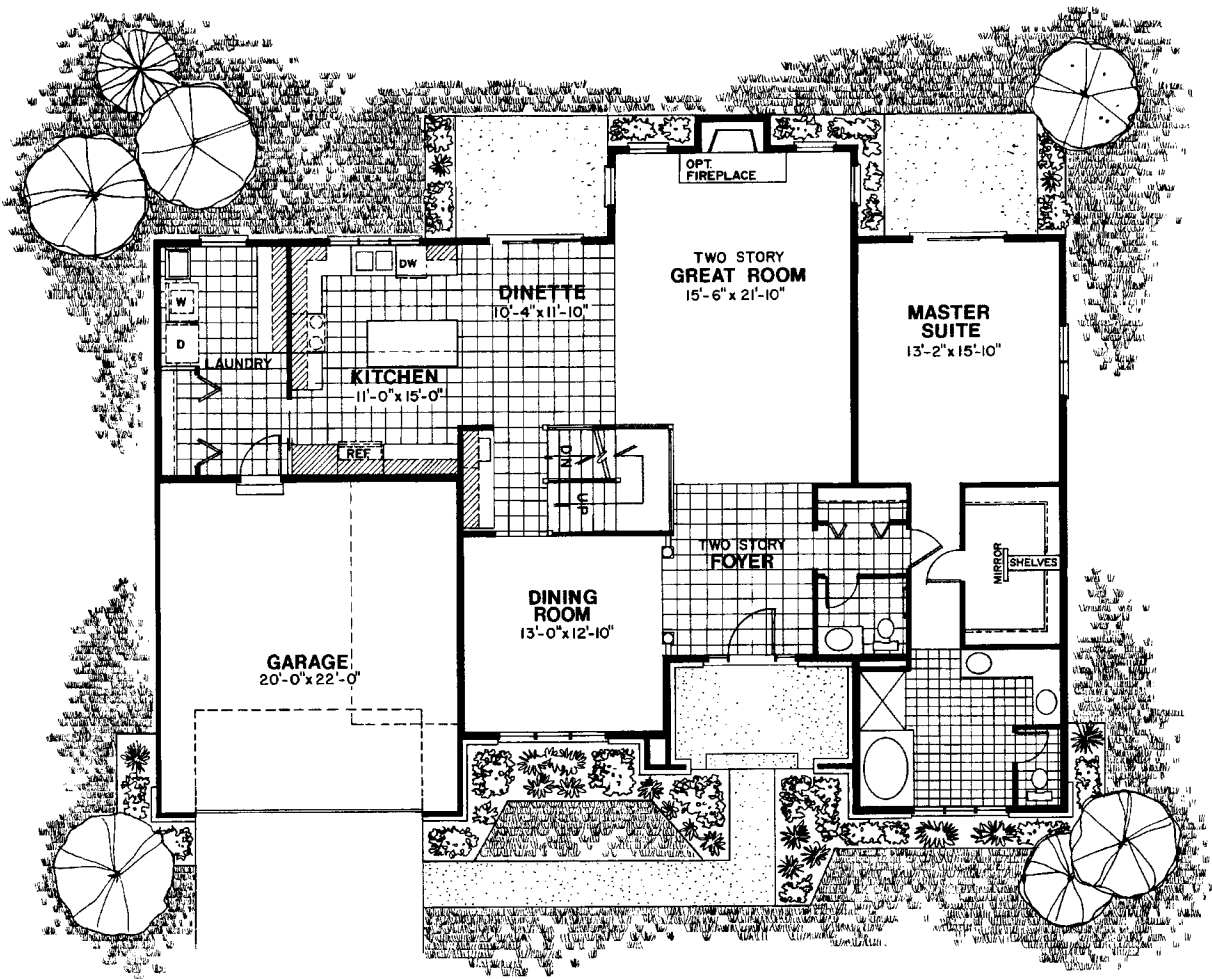


3,090 Square Foot Two - Story

**ST. JAMES**

**Hans  
Hagen  
Homes**

# If You Can Dream It... We Can Build It



## ST. JAMES

[www.hanshagenhomes.com](http://www.hanshagenhomes.com)

941 N.E. Hillwind Road Suite 300 • Minneapolis, Minnesota 55432 • 612/586-7200



Plans and specifications are constantly changed to better serve our customer's.  
 Final plans and specifications will determine dimensions, elevations and products used.  
 5/98 © All plans are copyrighted by Hans Hagen Homes, Inc., MN builder license no. 0001991





*If You Can Dream It... We Can Build It*

**Hans Hagen Homes, Inc.**

941 N.E. HILLWIND ROAD. SUITE 300 MINNEAPOLIS, MINNESOTA 55432  
CORPORATE OFFICE: (612) 586-7200 CORPORATE FAX: (612) 572-9417